

Department of Agricultural Land Management and Development (DALaM)

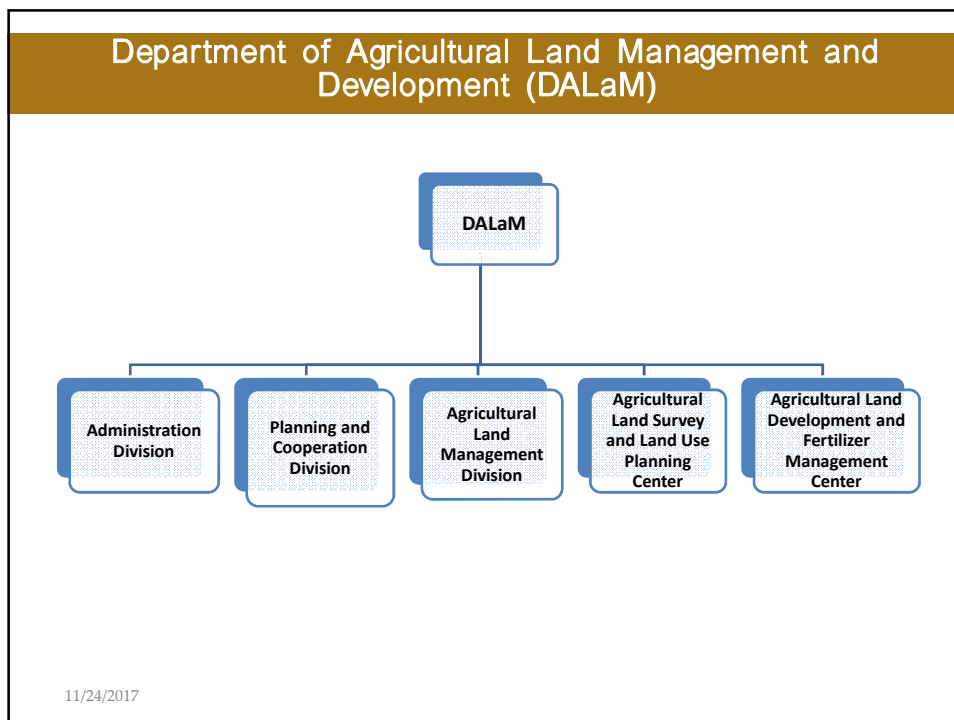
Official establishment: 19 September 2012

Mandate

- ① Survey, allocate, determine and divide the agricultural land
- ② Agricultural land conservation and management (Agricultural land titling)
- ③ Soil improvement, experiment /demonstration and technology usages, improving soil and agricultural land uses as well as controlling of composts.

MAF No 3816/MAF, 18 September 2017

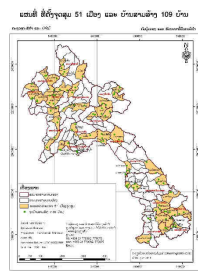


11/24/2017

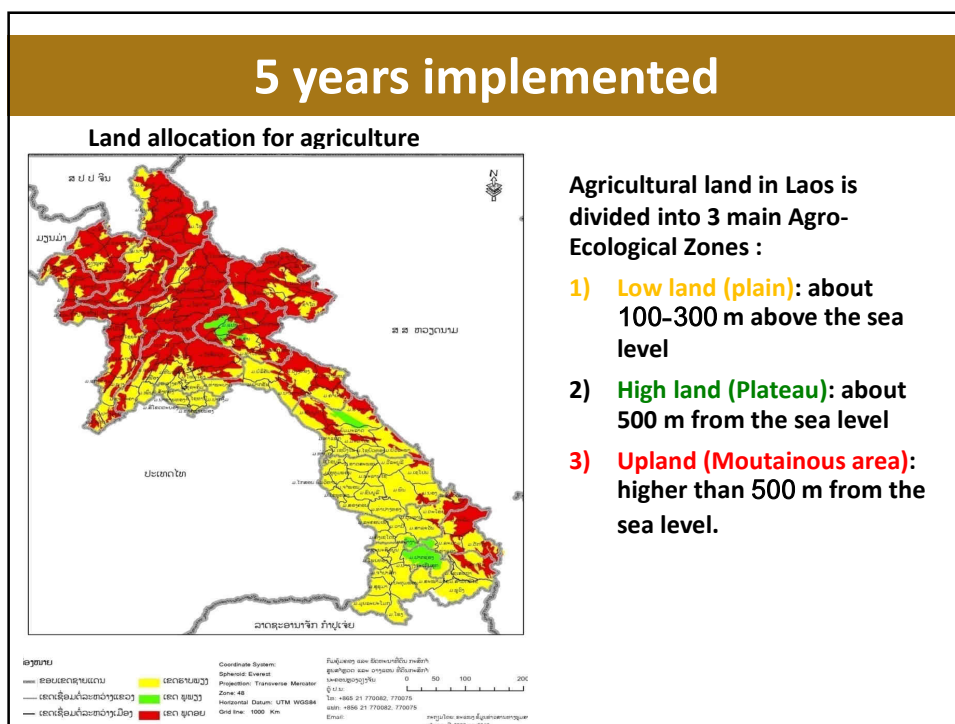
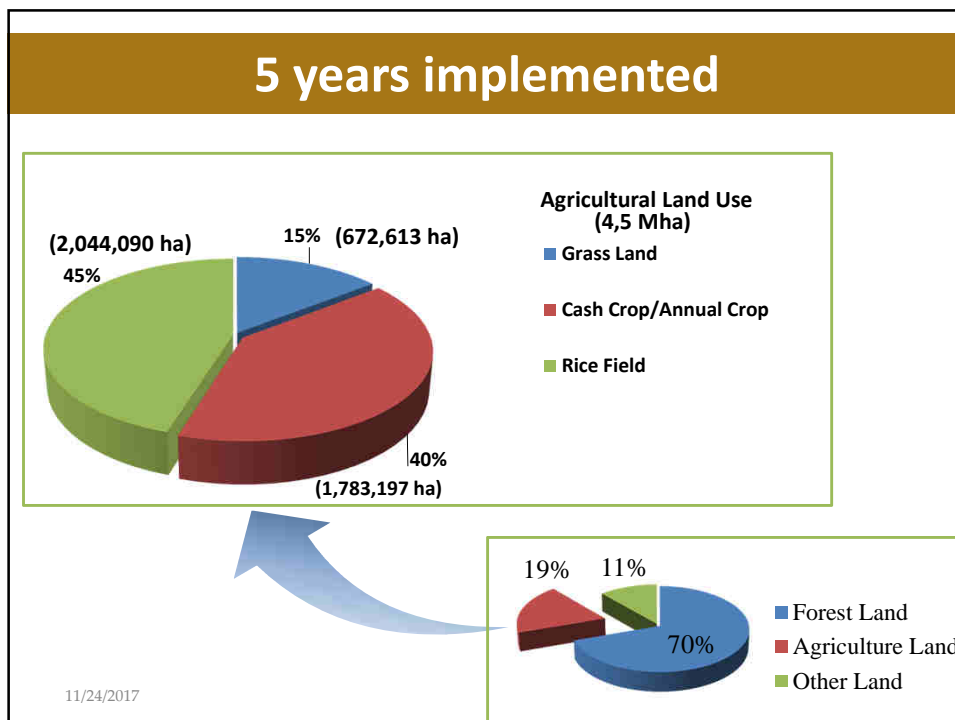


5 years implemented

1. Survey, allocation, determination and division of agricultural land

- National land map, scale 1/1,000,000.
- Provincial land maps, scale 1/100,000 – 1/250,000
- Survey, allocation and determination of agricultural land and forestry at district levels (scale 1/50,000); reports and maps completed for 148 districts
- Participatory agricultural land use planning at village clusters/village levels (scale 1/5,000-1/10,000) completed 1176 villages,, including 42 priority target villages (Sam sang)
- Data collection on paddy land for food security project and producing rice for commercial in 10 districts of 2 provinces of Khammouan and Savannaket) covering total areas of paddy land 174,269 ha (23,924 ha dry season paddy rice)
- Survey of paddy land across the country which is divided into 3 levels covering areas approximately 1.143.900 ha



5 years implemented

2. Agricultural land management

- Involved in the studies and research on agriculture and forestry management across the country
- Pilot program on *agricultural land titling* for 348 villages, food security project and producing rice as commercial products in 12 focal provinces with 18,234 land plots covering areas 18,395 ha and issuing permanent 416 plots in partnership with Ministry of Natural Resources and Environment.
- Handbook on *participatory land use planning* in cooperation with GIZ-LMDP and tested using in the target provinces across the country.
- Definition of standards for the issuance of certificates for agricultural land, certificate of agricultural land development.



11/24/2017

5 years implemented

3. Agricultural land conservation and development

- Built up of academic networks and trainers on land conservation and improvement at village levels (soil doctor based in village) for 468 people (48 females) at 174 villages, 52 districts in 18 provinces. In this there are 3 built tasks for 51 people in 41 villages of 26 districts of 10 provinces.
- Survey and soil assessment of paddy land in 7 zones of paddy fields and offered documents consist of reports and maps scale 1/50,000
- Demonstration of cropping systems using soil conservation technology in 6 districts of 6 provinces (EFICAS,...)
- Training for officials from departments, units as well as farmers on producing composts, biogas, bio-extract, green composts in 96 villages, 53 districts, 18 provinces, 1550 beneficiaries.



11/24/2017

5 years implemented

4. planing and cooperation.

- Definition of a strategy for agricultural land management and development towards 2025 and of a vision toward 2030, creating an five year action plan
- Project implementation in cooperation with internationals organizations and initiatives e.g., EFICAS, MSEC, Rights-LINK II, ANSOFT, AFACI, GIZ-NUDP, GIZ-LMDP-ELTeS, TABI, Sino-ASEAN friendship, Scientific and Technical collaboration (DALaM-Japan), CLIPAD etc.



11/24/2017

Vision toward 2030

“Land management and development for agricultural sustainability based on participatory approaches”

Land management: The process of conservation, management, agricultural land use effectively, peaceful and fair correcting as target on land titling, following the laws and rules, determination of measurement in inspection management and evaluating the impacts on natural, environment and society.

Land development: land conservation and improvement, experiment/demonstration and transfer technology, improving and using agricultural land so as to manage and use composts and agricultural land development and composts on investment on labor forces, materials, capitalization, technology and infrastructure so as to make land healthy and better and suitable for crops and increasing yields.

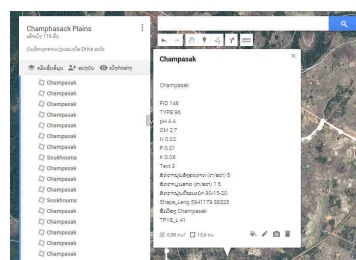
Sustainable agriculture: Using land for agricultural production based on survey, allocation and determination agricultural land areas, correct, managing and using land effectively on social economics and environment.

Participatory: stakeholders both public and private sectors, entrepreneurships, farmers, partners as well as local community take part in the tasks of land management and development for clean, safe and sustainable agricultural productions.

Implementation program

I. Program for agricultural land management

- 1) Development of legislation on agricultural land
- 2) Survey and plan using land at village clusters and villages (scale 1:25.000 and 1:10.000)
- 3) Improvement of agricultural database and maps
- 4) Planning for agricultural land at 7 great paddy fields
- 5) Agricultural land titling



11/24/2017

Implementation program

2. Program for agricultural land development and controlling compost

- 1) Restore and prevent soil erosion
- 2) Water source development for soil and water conservation
- 3) Global warming and climate change protection
- 4) Supporting and developing soil quality for crop cultivations.
- 5) Researching and developing the quality of compost and bio-tech for increasing productivity
- 6) Creation of village soil doctor

3. Program for Capacity building for human resources and infrastructures

- 1) Building technicians experts on specific topics
- 2) Developing and supporting local staff
- 3) Improvement of lab room

11/24/2017

